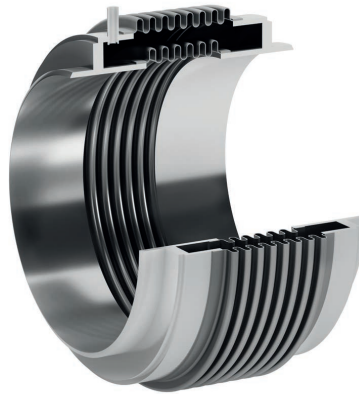


# Jacketed

## MJA series

Jacketed Expansion Joints are used in a set of particular circumstances such as when regular insulation is not sufficient and when the main fluid has to be kept at a fixed temperature or simply for security reasons.

This model involves using two bellows, one on the inside and one on the outside.



MJA

This model involves using two bellows, one on the inside and one on the outside.

## Features

TYPE	SERIES					
Jacketed	MJA					
<b>PRESSURE THRUST RESTRAINT</b>	<b>MOVEMENTS</b>		<b>MATERIALS</b>			
✘	Axial	✓				
	Lateral	Single-plane	✓		Austenitic Stainless Steels 304, 321, 316, 316L, 310, 309...	Sizes from DN-50 up to DN-10000
		Multi-plane	✓		Nickel Alloys Inconel, Incoloy, Hastelloy...	Single ply or multiply construction
	Angular	Single-plane	✓		Carbon Steel P265GH, 16Mo3, 13 CrMo 44...	One or more convolutions
		Multi-plane	✓			

Sample images

